



HCI LED
 800.909.4875
 812.867.0848 Fax
Sales@HCI-LED.com

DATASHEET



LED Flex Neon

Available in Multiple Colors and Sizes

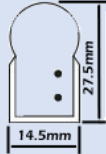
Features

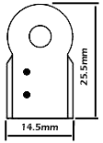
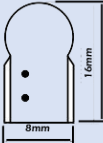
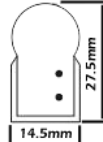
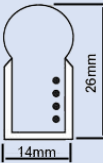
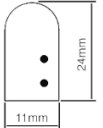
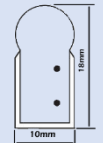
Now, there is a way to get that traditional neon look that does not involve complicated installations, extreme fragility, shock hazards, and high maintenance and power costs. Utilizing advanced LED technology and materials processing techniques LED Neon Flex compares to glass neon visually, but is not rigid, can be cut with standard tools and may be bent by hand to form intricate designs including corners, curves, letters, logos, patterns, motifs, and all other applications where traditional glass neon has been applied.

Installation can be completed in minutes instead of hours and most importantly, it gives off no hot spots. LED Flex Neon is waterproof and utilizes standard 12VDC which make the product safer than glass neon. LED Flex Neon is virtually indestructible, incorporating the very latest encapsulated PVC jacket housing which achieves brightness and visual intensity reminiscent of glass neon. Available in a wide variety of colors such as Red, Green, Yellow, Blue, Orange, Yellow, White, and RGB; and in sizes from 0.3"x0.6" (8mmx16mm), up to 0.7"x1.1" (18mmx28mm).

Specifications

Physical	Dimensions:	Varies by model
	Material:	Aluminum, Copper, PVC
	Shipping Length:	166ft per reel 50M per reel
	Working Temperature:	-4°-140°F -20°-60°C
Electrical	Power supply:	12V
	Power consumption:	Varies by model
Safety	IP Grade:	65 (when installed according to recommendations)
	Estimated Lifespan:	>50,000 Hours
	Warranty	2-years (outside); 5-years (inside)

Item	Size	Colors	Cutting Unit	LEDs/ft.	Power	Operating Voltage	Max Load/Run
LED Flex Neon DIP Plus FNBSN12V-XX	.55"x1.06" (14x27mm) 	Red, Amber, Orange, Blue, Green, Cool White, Warm White, Lemon Yellow	1.96" (50mm)	31	1.85W/ft. (6W/M)	12V	32.5 ft. (10M)

Item	Size	Colors	Cutting Unit	LEDs/ft.	Power	Operating Voltage	Max Load/Run
<i>LED Flex Neon SMD 2835 Plus</i> <i>FNBLMD 12V-XX</i>	.55 »x1.06" (14x27mm) 	Red, Amber, Orange, Blue, Green, Cool White, Warm White, Lemon Yellow	1.96" (50mm)	37	3.7W/ft (12W/M)	12V	32.5 ft. (10M)
<i>LED Flex Neon SMD 2835 Mini</i> <i>FNLMMD 12V-XX</i>	.31"v.63" (8x16mm) 	Red, Amber, Orange, Blue, Green, Cool White, Warm White, Lemon Yellow	1.96" (50mm)	37	3.7W/ft (12W/M)	12V	32.5 ft. (10M)
<i>LED Flex Neon Color Jacketed</i> <i>FNBLSC 12V-XX</i>	.55 »x1.06" (14x27mm) 	Red, Amber, Orange, Blue, Green, Cool White, Warm White, Lemon Yellow	1.96" (50mm)	25	1.48W/ft. (4.8W/M)	12V	32.5 ft. (10M)
<i>LED Flex Neon 5050 RGB</i> <i>FNBLSM 12V-RGB</i>	.55"x1.06" (14x27mm) 	Controlled with 4 wires 3 circuited general controller, Emits 7 single colors: Red, Green, Blue, Yellow, Magenta, Cyan, White.	1.96" (50mm)	19	4.43W/ft (14.4W/M)	12V	32.5 ft. (10M)
<i>Mini LED Flex Neon</i> <i>FNBMLN 12V-XX</i>	.43"x.94" (11x24mm) 	Red, Amber, Orange, Blue, Green, Cool White, Warm White, Lemon Yellow	1.96" (50mm)	31	1.85W/ft. (6W/M)	12V	32.5 ft. (10M)
<i>Ultra-thin LED Flex Neon</i> <i>FNBULN 12V-XX</i>	.39"x.63" (10x16mm) 	Red, Orange, Yellow, Blue Green, White	1.96" (50mm)	31	1.85W/ft. (6W/M)	12V	32.5 ft. (10M)



Installation

1. Easy Connector with Splicing Example (Indoor Not Waterproof)



Front connector includes
 1. Transparent movable electrical plug
 2. Simple front connector
 3. Two inner-surface sheath tube
 4. PVC glue



Splicable connector includes
 1. Simple middle connector
 2. Two inner-surface sheath tube



Attachable end cap
 1. Fixture
 2. Movable end plug
 3. PVC glue

2. Molded Connector (IP44)



Front connector
 Fill-in front connector

Molded end cap
 End plug

Installation Notes

- A Catalog is not a substitute for a user manual. The installation illustrations to the right are for reference only.
- Always follow the instructions in the provided user manual.
- Cut only on the cut marks provided on the fixture housing.
- When applying linear solutions to a channel make certain to use an appropriate silicone adhesive between the base of the channel profile and the fixture housing to eliminate stretching over time.



Cutting Mark
 ULN-FX Must be cut only on the indicated mark



Linear Installation
 1. Aluminum Channel ULN-FX-CH
 2. Apply an adhesive silicone between the channel base on fixture housing to prevent slippage and stretching over time



Curve Installation
 1. Mini channel ULN-FX-5
 2. Screw



90° Installation
 1. Mini channel ULN-FX-5

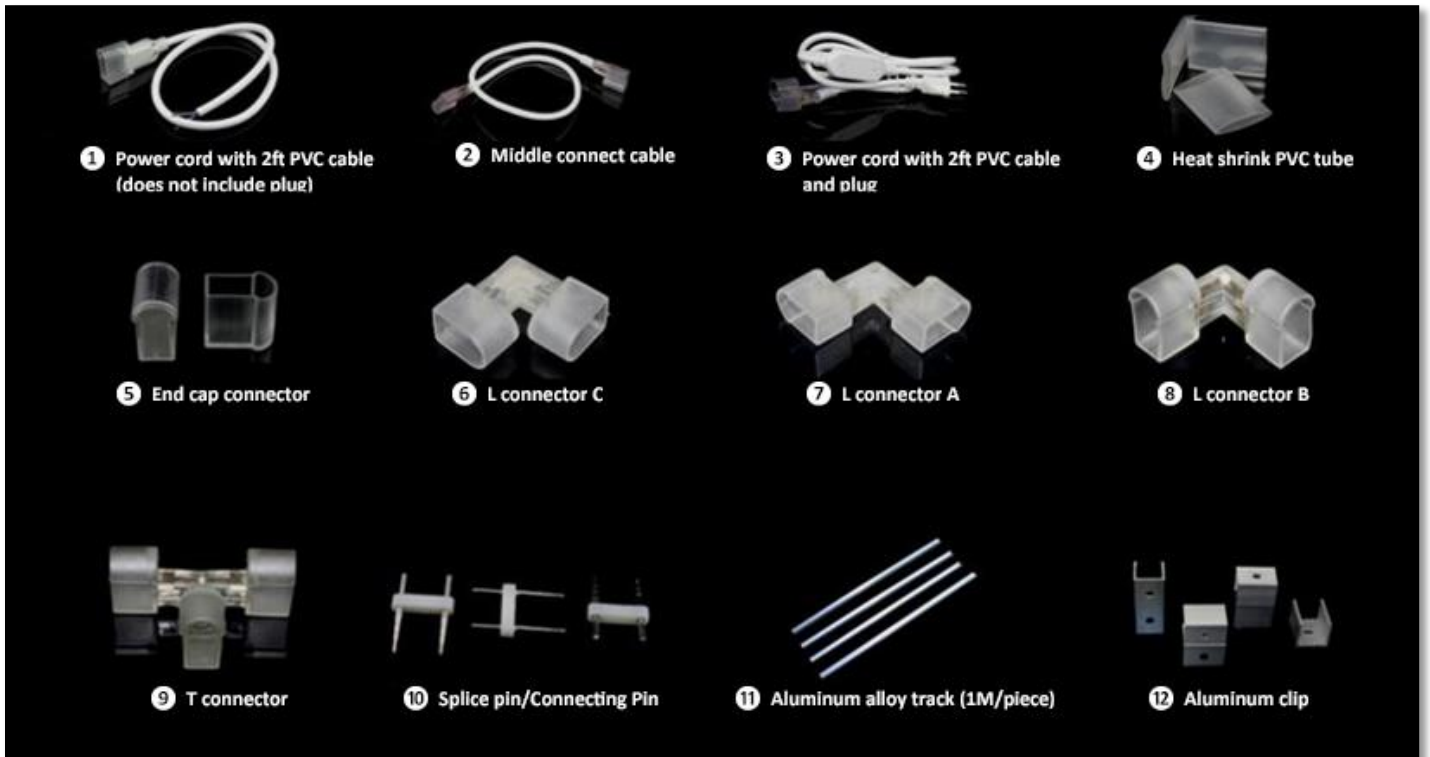


180° Installation
 1. Mini channel ULN-FX-5



Convex Installation
 Mini channel ULN-FX-5

Accessories



Packaging



Light Dispersion

